

## SABAP2 Website - a Treasure Trove of Information!

A new website for the Southern African Bird Atlas Project was launched in February 2019 that boasts a much more modern look and functionality. The website is a treasure trove of information for atlasers and non-atlasers alike. This article describes some of the useful information available on the website.

### Species Maps

Do you want to know if a species occurs in an area you will be visiting? SABAP2 maps can assist you! Visit <http://sabap2.adu.org.za/species> and search for a species in the search box. You can either scroll down the species list or simply type "kingfisher" to see a list of all the kingfishers in Africa. If you scroll down to African Pygmy Kingfisher and click on the name, a map is displayed with the pentads where the species has been recorded (Figure 1).

#### Pygmy-Kingfisher, African (*Ispidina picta*)

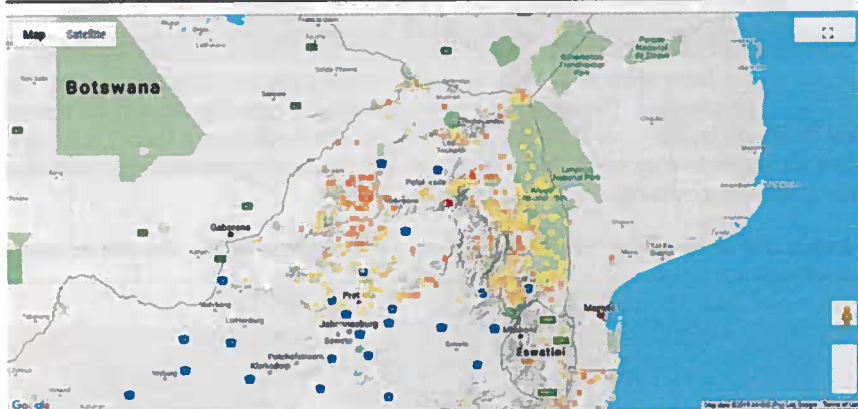


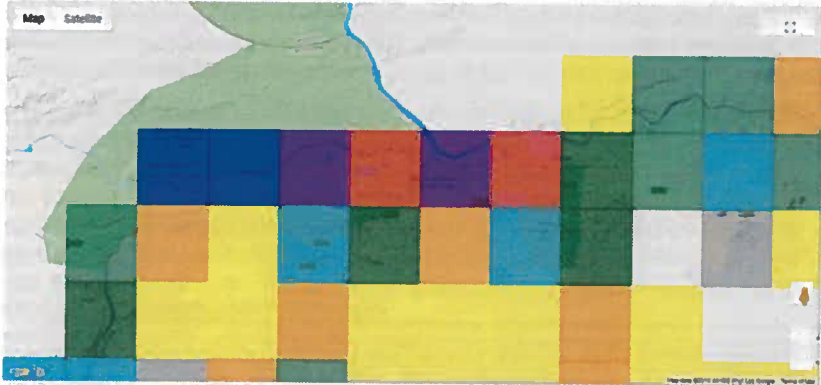
Figure 1: Map of African Pygmy Kingfisher. Click on the square in the top right corner to go to full screen view.

You can zoom into the map, and if you select the square box on the top right-hand side of the map, it will open the map in full screen view. By zooming into the area of interest you can see exactly where the species was recorded. Below the map are graphs of seasonal changes in reporting rate (the proportion of cards that contain the species), which gives some idea of the relative abundance of the species and is especially valuable for migratory species. By selecting the download tab, you can download the data for this species in different formats.

### Pentad species lists

Do you want to obtain a species list for a site you plan to visit? Easy to do on the SABAP2 website. Visit <http://sabap2.adu.org.za/coverage/country/southafrica> and zoom into the area of interest (Figure 2). Double click on one of the pentads and a new page will open for the pentad. On the new page, click on the "species" tab below the map

Figure 2: Click on the pentad for which you would like a species list  
This generates a large table listing all the species recorded in this pentad (Figure 3).



Do you want to know which is the most commonly recorded species? Click twice on the "Full (RR%)" column heading. The table will be sorted according to reporting rate with the species with the highest reporting rate at the top. These tend to be the most common species in the atlas block and should be easy to find. As you go down the list, the reporting rate decreases, indicating that species are increasingly less likely to be seen.

Figure 3: Click on the heading "Full (RR%)" to change the sort order so that the birds with the highest reporting rate is at the top.

Sp	Common_group	Common_name	Genus	Species	Full (RR%)	Latest Full
1	420 Blue-warbler	White-throated	Warbler	subulnoides	83.1	2010-04-21
2	346 Larkspur	Black-throated	Spizella	arctica	82.7	2010-04-21
3	140 Bullfinch	Dark-capped	Pyrrhuloxia	tricolor	81.4	2010-04-21
4	742 Sparrow	Meadow	Lanius	excubitorides	80.9	2010-04-21
5	230 Thrasher	Blue	Urolophus	virginicus	80.1	2010-04-21
6	173 Catbird	Warbling	Thryothorus	trichothorus	80.0	2010-04-21
7	317 Dove	Laughing	Coccyzus	maculirostris	80.0	2010-04-21
8	413 Redstart	Black-throated	Corvus	corax	80.0	2010-04-21
9	144 Titmouse	T. pusillus	Parus	parus	76.4	2010-04-21

## Find gaps in the 2019 Coverage Map

Lastly, for the atlasers. Earlier this year we set atlasers a challenge to atlas 5 300 pentads in 2019. The reason for this request is that in order to monitor changes in bird distribution we need data for as many pentads as possible each year.

So how do you know if a pentad has been atlased in 2019? Easy! Visit <http://sabap2.adu.org.za/> and then select the menu item "Coverage", then "South Africa" and then the province you want to atlas. A map with all the pentads atlased since 2007 will be displayed. To the right of the map select "2019" in the "Select Year" drop down box. This restricts the map to pentads atlased in 2019. By zooming into the area, it is easy to identify pentads that have not been atlased in 2019. Summary

There is a lot more you can do on the SABAP2 website. Spend some time on the website, try out the different menu items and search for the hidden treasures. The data shown on these maps was collected by dedicated atlasers and we thank them for their contribution. If you are keen to become an atlaser, write to [sabap2@birdlife.org.za](mailto:sabap2@birdlife.org.za) and we will try our best to assist you.

**Ernst Retief**  
BirdLife South Africa and SABAP2 Co-ordinator.



BIRDLIFE LOWVELD  
THANKS  
DR JACK  
FOR THE QUIRKY HUMOUR AND  
ALWAYS EXCEPTIONAL ARTWORK  
WHICH HE ADDS TO THE PAGES OF  
OUR QUARTERLY  
NEWSLETTER.

YOU ARE APPRECIATED SO MUCH!

---