

### Pinkthroated Longclaw

Rooskeelkalkoentjie

*Macronyx ameliae*

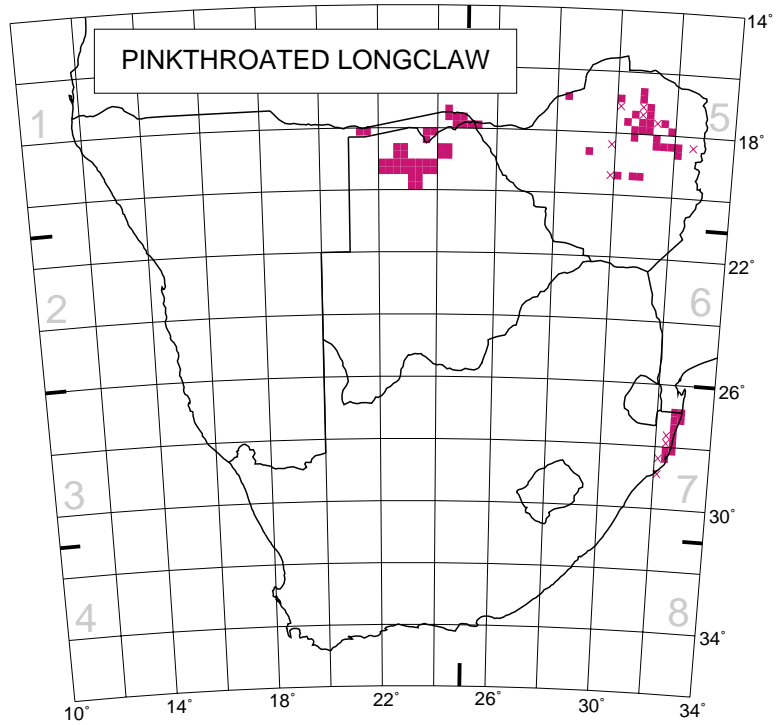
The Pinkthroated Longclaw has a discontinuous range in southern Africa, being restricted to three areas: the Okavango Delta, Linyanti marshes and Chobe floodplains in Botswana and the Caprivi Strip; the Zimbabwe highveld, especially in the northeast; and the KwaZulu-Natal littoral from Lake St Lucia (2832AD) northwards. The nominate race occurs in KwaZulu-Natal and the two northern populations belong to the subspecies *M. a. altanus* (Clancey 1980b). The species is widely distributed in East and Central Africa.

It was most frequently recorded in the Okavango in Botswana, followed by Miombo in Zimbabwe. It occurs in wetter areas than other longclaws, favouring shorter and finer grasses (Britton 1970; Masterson 1973a). Both Clancey (1964b) and Maclean (1993b) observed that it occurs in waterlogged or sodden grassland bordering vleis and pans, which appear to be important for at least part of the year. In the Okavango and Caprivi it occurs in seasonally inundated floodplains.

There appears to be some local movement (Keith *et al.* 1992). The models appear to support this; an alternative explanation is that the birds become more conspicuous while displaying at the start of the breeding season. In wetlands with seasonal variations in water-levels, the breeding habitat is deserted during extremely high flooding or extreme desiccation, resulting in nomadic movements. In Zimbabwe it occasionally occurs at Lake Kariba, possibly an indication of extensive wandering (A.J. Tree *in litt.*).

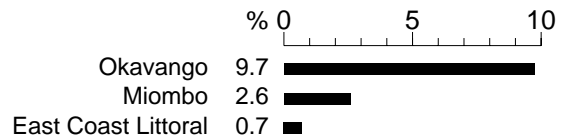
Except in the Okavango and Caprivi, it overlaps with the Yellowthroated *M. croceus* and Orangethroated *M. capensis* Longclaws, but it prefers wetter habitats.

Breeding is known to take place during the wet season, September–April (Dean 1971; Irwin 1981; Ginn *et al.* 1989). The Pinkthroated Longclaw is listed as ‘vulnerable’ in South Africa (Brooke 1984b). Its continued presence in KwaZulu-Natal remains uncertain while industrial development continues along the coast.

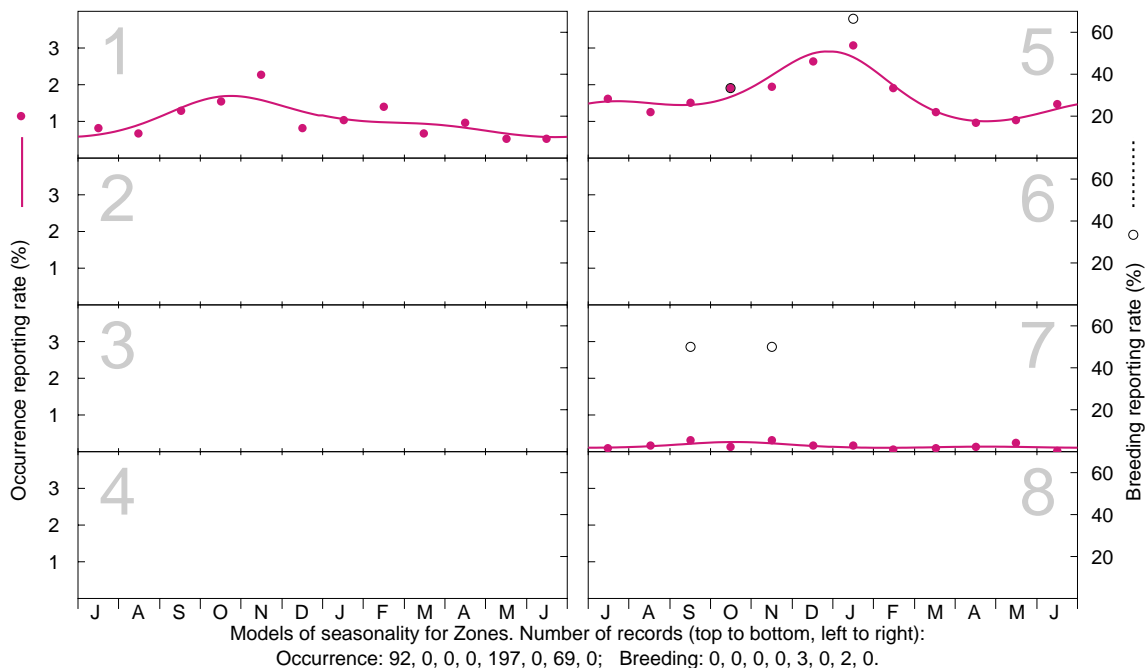


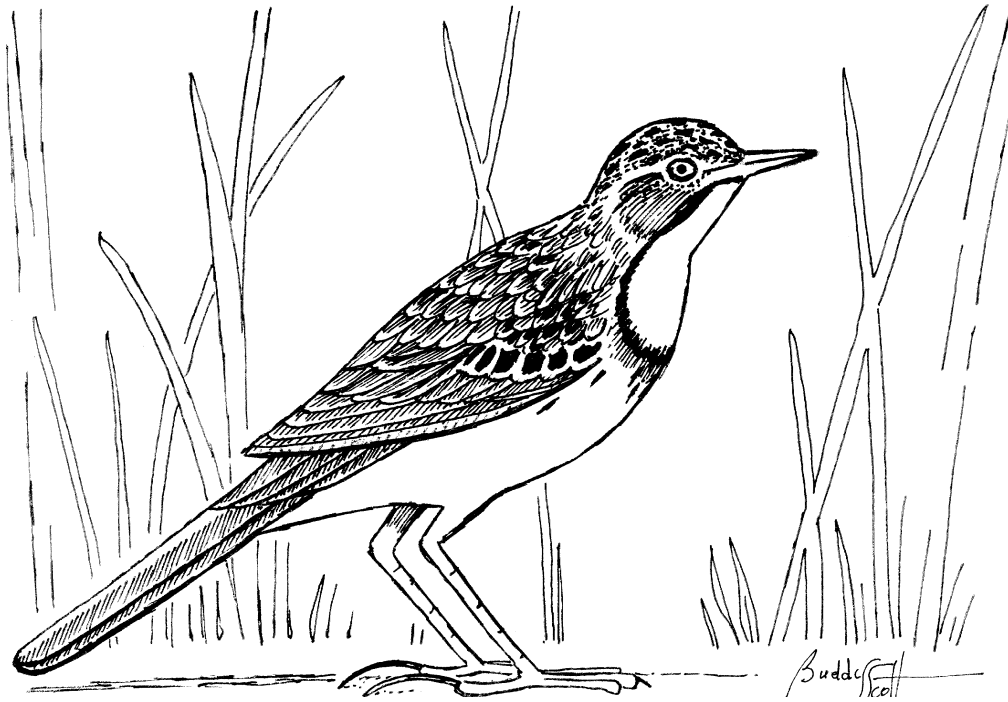
Recorded in 88 grid cells, 1.9%  
 Total number of records: 360  
 Mean reporting rate for range: 6.6%

Reporting rates for vegetation types



D.H. Day





*Pinkthroated Longclaw*